

Landscape Architecture Group

Landscape Architecture is an interdisciplinary, integrative and critical life science by design. It mediates between worlds of knowledge in the natural and social sciences, the arts and the humanities.



WAGENINGEN **UR**

For quality of life



**INTERNATIONAL COURSE
LANDSCAPE PLANNING AND DESIGN**

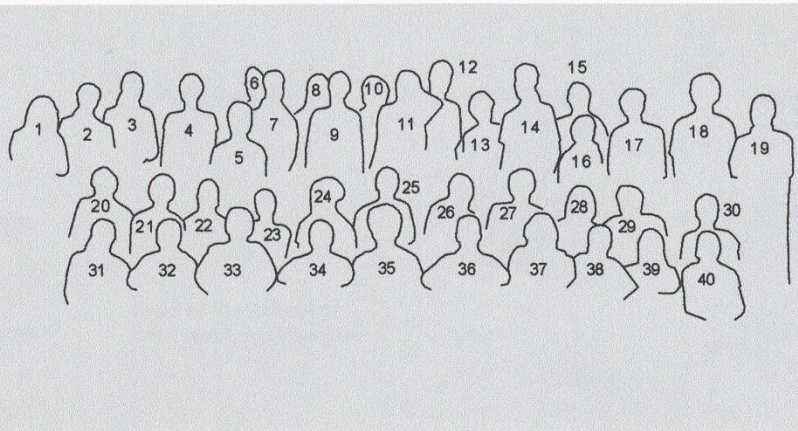


Wageningen University and Research Centre
The Netherlands

Department of Environmental Sciences
Chair of Landscape Architecture



- 1 Maria del Carmen
- 2 Yi Dou
- 3 Ewa Twardoch
- 4 Maria Maciszewska
- 5 Claudia Rodrigues
- 6 Louise Sam-Sin
- 7 Anna Hilzensauer
- 8 Elin Samuelsson
- 9 Kerstin Schwarz
- 10 Ines Keindorff
- 11 Wenke Kraft
- 12 Michiel Brink
- 13 Wiebke Klemm
- 14 Karim van Wonderen
- 15 Hanh Phung
- 16 Sabine Schmid
- 17 Mareike Kruskamp
- 18 Artur Ribeiro
- 19 Ger Parlevliet
- 20 Miguel Pampulha



- 21 Elise Genot
- 22 Anne Wilhelm
- 23 Celine Dumoulin
- 24 Beata Fornal
- 25 Martijn Blaas
- 26 Verena Butt
- 27 Magnus Ydmark
- 28 Vera Baptista
- 29 Sebastian Berr
- 30 Susanne Rieder
- 31 Beatriz Pulido
- 32 Andre Rosado
- 33 Pavel Bulir
- 34 Vincent Tanguy
- 35 Tim Duggan
- 36 Vojtech Novotny
- 37 Ondra Ottomanski
- 38 Joao Oliveira
- 39 Cristina Leal
- 40 Cornelia Zimmer
Karel Slansky

**International Course in Landscape Planning and Design
from May 1 until July 16, 2003**



Wageningen University and Research Centre
The Netherlands

Department of Environmental Sciences
Chair of Landscape Architecture

CERTIFICATE OF ATTENDANCE

Karel Slansky

has attended the

International Course ‘Landscape Planning and Design’
Landscape planning and design at regional and subregional levels

from May 1 until July 16, 2003

Ir. Ger Parlevliet

Coordinator
Landscape Programme

Ir. Ingrid Duchhart

Head of the School of
Landscape Architecture

Ir. Michiel Brink

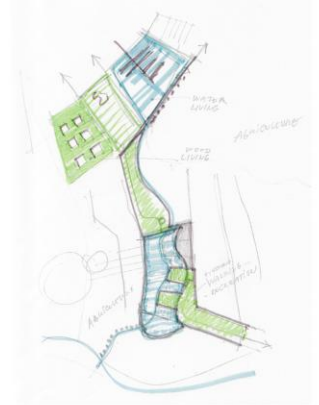
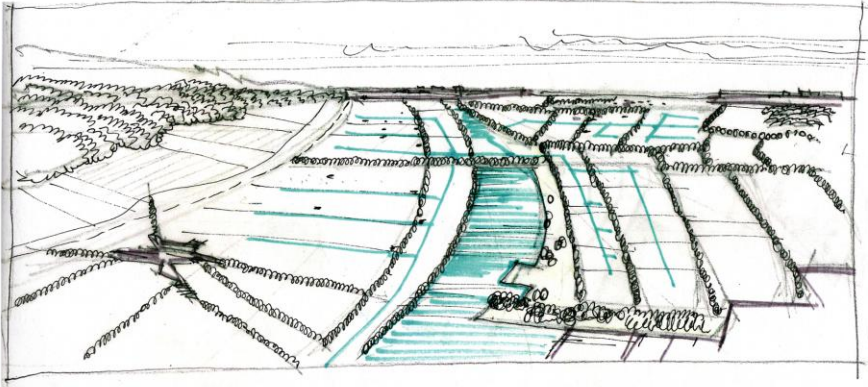
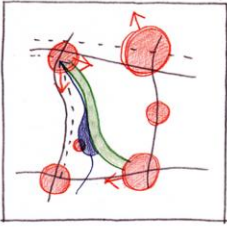
Tutor

Dipl.Ing. Wiebke Klemm

Tutor

Course subjects:

- Lectures in Dutch Planning and Design
- Excursions to various urban and rural projects
- Planning and Design Project “Rural and urban development in the WERV-area (Wageningen-Ede-Rhenen-Veenendaal)”



BINNENVELD
 ICLA 2003
 student: Karel Slánský



BINNENVELD - landscape proposal